

A stylized sun graphic on the left side of the slide. It features a solid yellow circle representing the sun, with several short, thick yellow dashes above it representing rays. The sun is partially obscured by a large white semi-circle that frames the main text.

Identifying Racial/Social Determinants Impacting Healthcare

Los Cien

July 16, 2020

28th Annual



Presented by Sutter Santa Rosa Family
Medicine Residency

latinohealthforum@gmail.com

July 27, 2020 - August 4, 2020

12 PM - 1:15 PM

7-Day Virtual Conference Series via Zoom

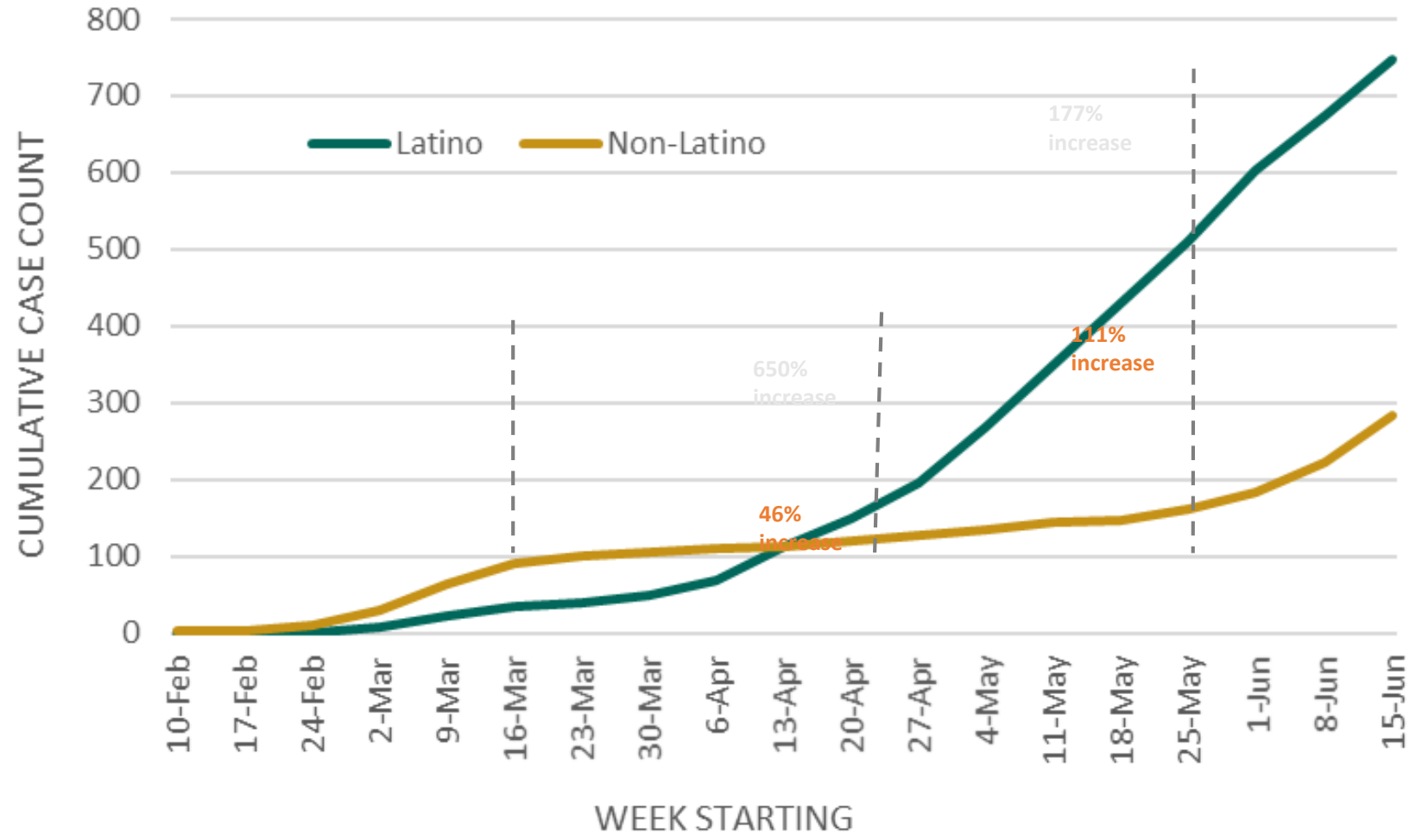
Discrimination and Health:

Addressing Disparities During the
COVID-19 Crises and Beyond



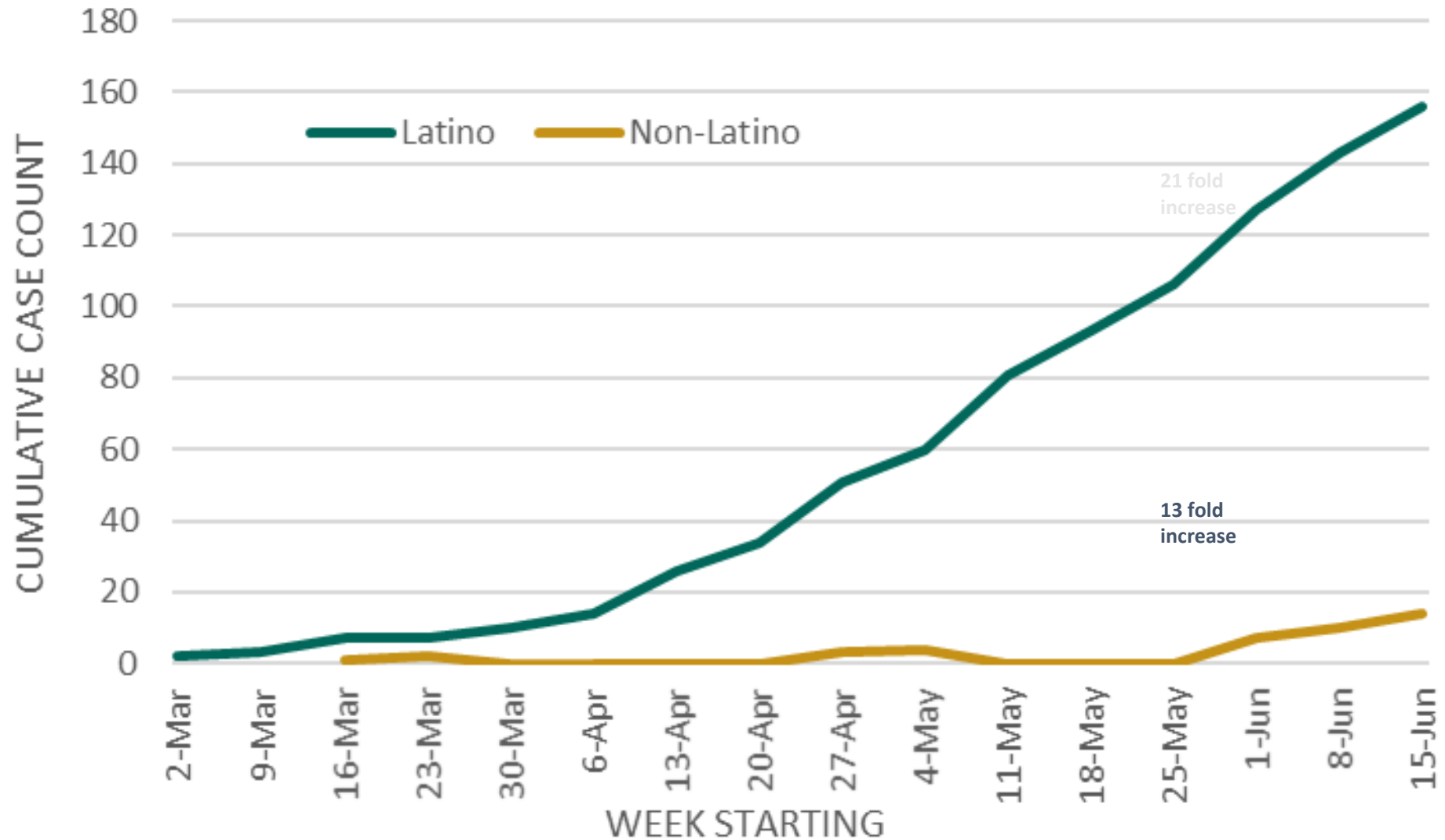


Cumulative COVID-19 Cases by Week of Onset of Symptoms— Latino and Non-Latino





Cumulative COVID-19 Cases Children <18 years – Latino and Non-Latino

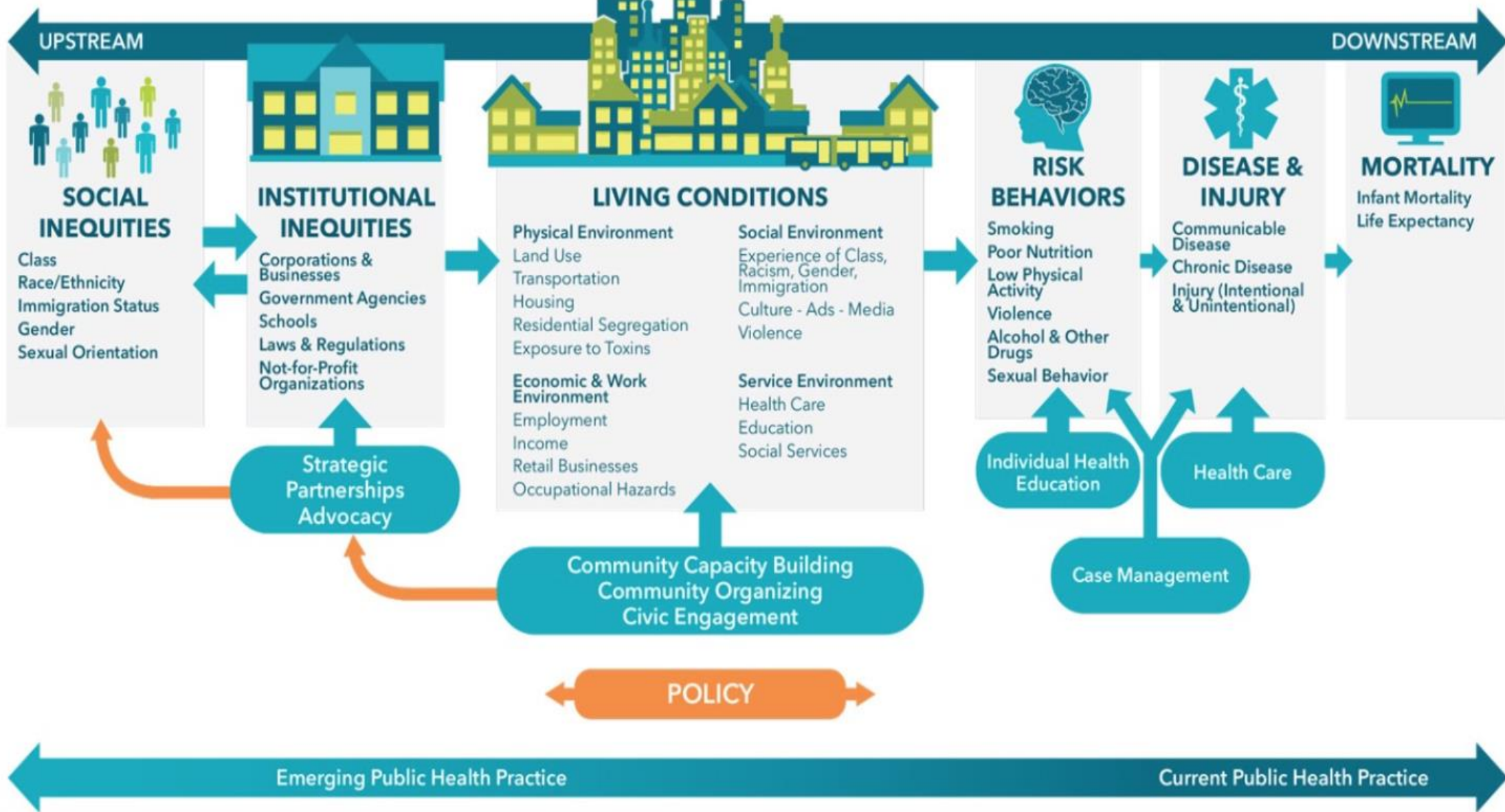


Factors Related to Higher Latinx COVID-19 Rates

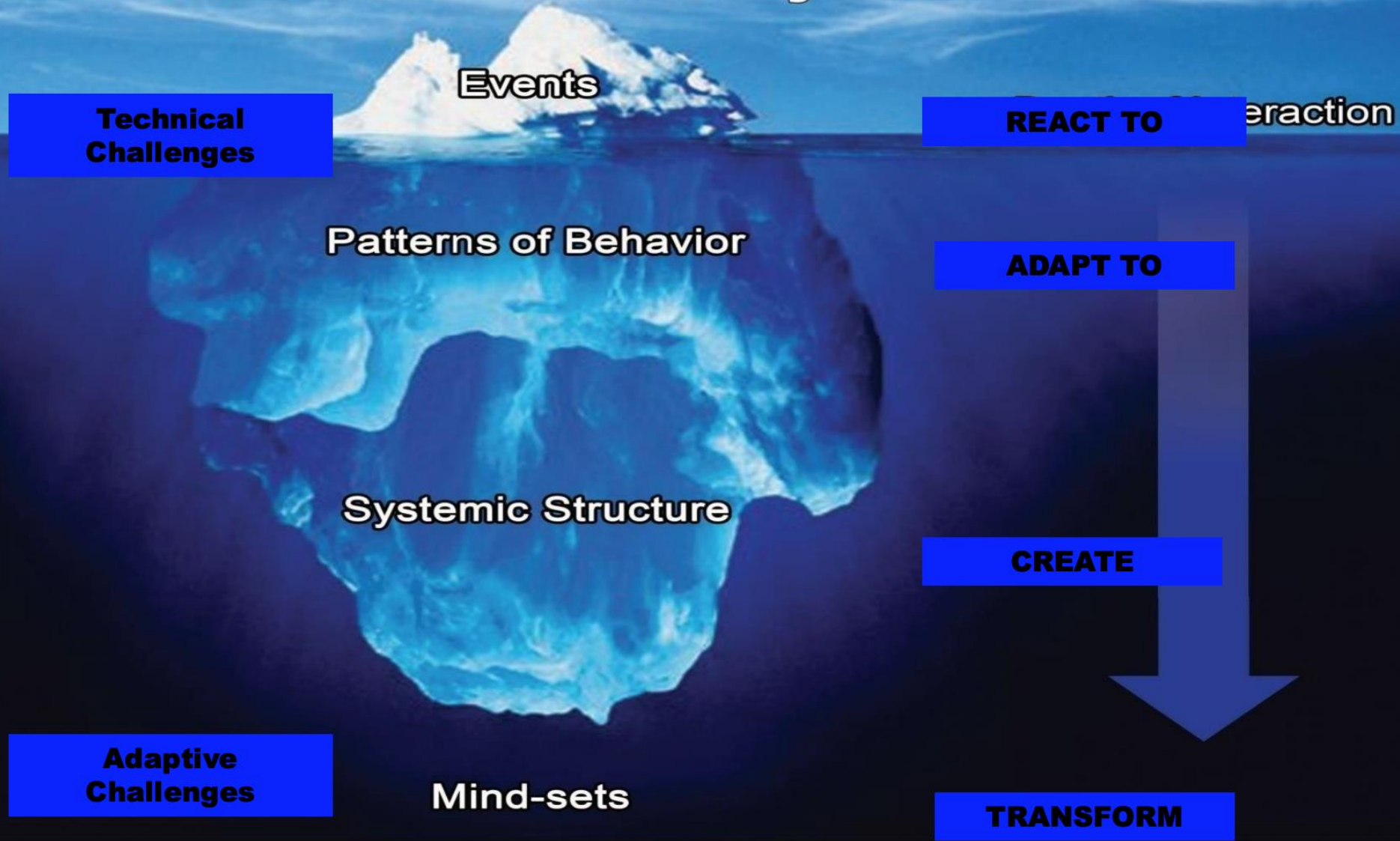
- Not everyone can work from home
- For low-wage, non-salaried workers with unpredictable and unstable hours, working from home is a luxury
- In poor neighborhoods, with overcrowded housing, social distancing is not a viable option
- Low income & minority workers overrepresented among essential workers – our drivers, building maintenance staff and grocery store employees, farmworkers, etc.

A PUBLIC HEALTH FRAMEWORK FOR REDUCING HEALTH INEQUITIES

BAY AREA REGIONAL HEALTH INEQUITIES INITIATIVE



The Iceberg - A Metaphor for the Level at Which We Interact with a System



Source: Sustainability Institute, adapted from other versions from the organizational learning field

<no-reply@zoom.us> Sat, Jul 11, 1:47 PM (C
28th Annual



**LATINO
HEALTH
FORUM**

Presented by Sutter Santa Rosa Family
Medicine Residency

latinohealthforum@gmail.com

July 27, 2020 - August 4, 2020

12 PM - 1:15 PM

7-Day Virtual Conference Series via Zoom

Discrimination and Health:

Addressing Disparities During the
COVID-19 Crises and Beyond



The Press Democrat